

» An **Award Winning** Myopia Control Lens

» **MiYOSMART** is a non-invasive lens engineered specifically to correct myopia and slows its progression.



60%
Slow Down
of Myopia
Progression

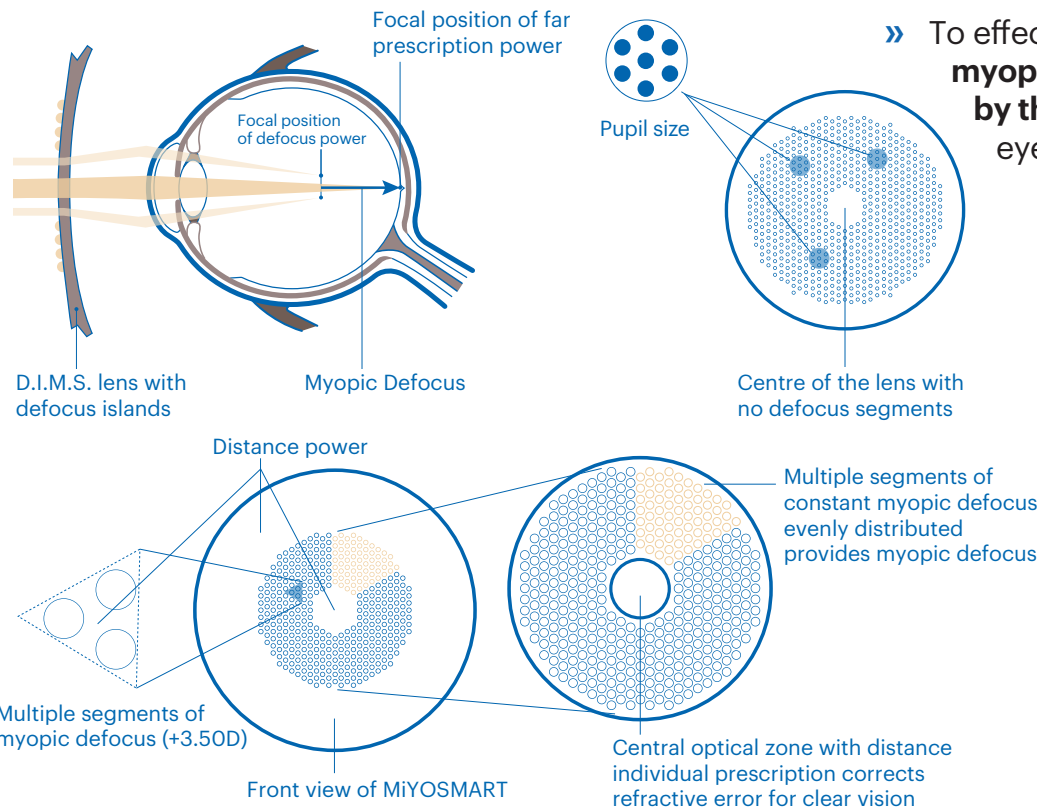


A patented technology for young patients known as the Defocus Incorporated Multiple Segments (D.I.M.S.), which slows down myopia progression on average by 60% and proven to halt myopia progression in 21.% of children through controlling eye growth.

- » Single vision corrective lens with a front surface that has **hundreds of small segments, each providing myopic defocus.**
- » The **eye sees through a pupil-sized area** causing a defocus zone in the eye.

- » **No defocus segments** within the 9.4 mm diameter circle area in the center of the lens.
- » Unique **design to measure lens power and correct refractive error** to meet visual needs

How D.I.M.S technology works in MiYOSMART



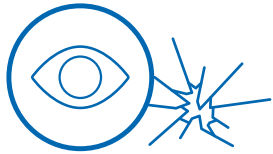
» To effectively control myopia progression, **myopic defocus has to be experienced by the wearer constantly**, even during eye movement.

With decades of experience in ophthalmic lens production and development, HOYA's D.I.M.S. technology successfully produced a smooth-surfaced lenses with multiple defocus segments. **MiYOSMART's cosmetic appearance is highly similar to regular single vision lenses.**

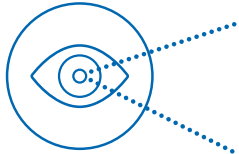
Eye Shield is an impact-resistant material with UV protection for all-round protective solution.



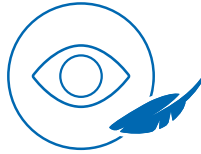
Since children are active, lens material is impact-resistant to offer their eyes the protection they need. MiYOSMART uses polycarbonate 1.59 which is a highly impact-resistant material that has passed the high velocity impact drop ball test.



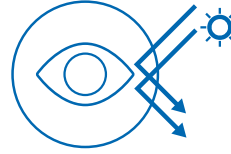
Strong and safe



Optical clarity



Thin and light

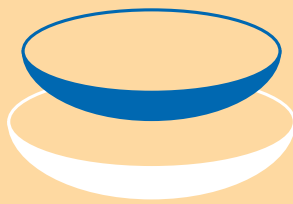
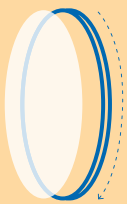


UV protection

MiYOSMART's Eye Shield

- ✓ Impact resistant
- ✓ Thin and light
- ✓ Comes with UV protection

MiYOSMART comes with an easy-to-wipe special anti-reflective and durable coating



Water-repellent

Prevents water stains

Special anti-reflective durable coating

Longer lasting coating

Availability Chart, Product Information and Pricing

Index	1.59
Power	SPH: -7.50D to Plano CYL: Up to -4.00D
	Combined power: -7.50D with maximum CYL of -4.00D
Central Clear Zone	Around 9.4mm in diameter
Treatment Zone	Around 33mm in diameter
Defocus Power	3.50D
Prescribed Prism	3 Δ Dioptre per lens
Diameter	60 – 65 – 70 – 75 mm
PRICE (Lenses Only)	\$400 (Warranty: 1 time change from 1 year of purchase if Rx change)

Together, we can solve myopia in children.



An estimated **5 billion people**, or **half of the global population**, could be affected by near sightedness by **2050**.



Research shows that **more time spent on near-work activities** is associated with a **greater likelihood of myopia**.



Examples of near-working activities are: using digital devices, deskwork and reading.



To ensure **MiYOSMART** benefits are maximized, it's recommended to follow our optometric protocol to analyze if myopia control is a good fit.

During the first visit, all visual functions of the child is assessed to get a clear overview of the current status. A few factors are examined to ascertain if the wearer is suitable for MiYOSMART. It is also essential to know the child and his/her parents' ocular and optical history.