

NEW!

Introducing  
ACUVUE® OASYS MAX 1-Day



Also available in Multifocal

Learn More About **MAX**

ACUVUE®

# Life has changed, impacting our eyes

Adults spend  
13+ hours daily  
on digital devices:  
**35% increase**  
since 2019<sup>1</sup>



**60% less blinking**  
from looking at  
digital screens  
compromises  
the tear film  
and can cause  
discomfort<sup>2,3</sup>



**71% say screen  
time or the total  
demands of  
work and life  
have increased  
in the last 2 years<sup>4</sup>**



Blue-violet light  
is **all around us**,  
all day<sup>5</sup>



Blue-violet light  
scatter **impacts  
visual clarity<sup>5</sup>**



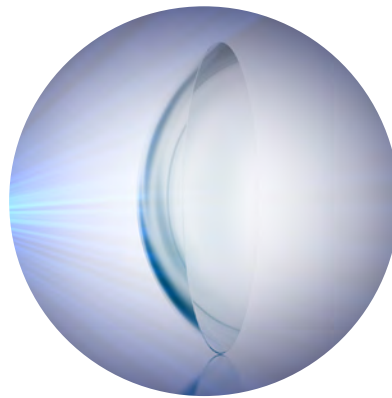
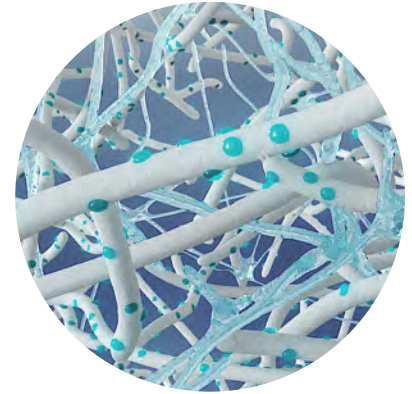
# Your patients need a breakthrough



## An unprecedented combination of 2 NEW technologies<sup>6</sup>

### TearStable™ Technology

**Optimizes wetting agent distribution**  
throughout the lens and on the surface<sup>6,7,8</sup>  
**Prolongs tear film stability\*\***  
**Delivers 2x lower evaporation rate vs.**  
DAILIES Total1®, MyDay® and Ultra®<sup>+6,8</sup>



### OptiBlue™ Light Filter<sup>0</sup>

**Provides 60% blue-violet light  
filtering<sup>0</sup>** - the highest level  
in the industry<sup>3</sup>  
**Reduces light scatter\*<sup>7</sup>**  
**Reduces halos\*<sup>7</sup>**  
**Reduces starbursts\*<sup>7</sup>**  
Provides Class 1 level UV blocking:  
**99.9% UVA and 100% UVB<sup>5#</sup>**

### Proven on-eye performance in clinical trials<sup>1</sup>

- 90% reported all-day comfort<sup>9</sup>
- 86% reported reduced feeling of tired eyes with digital devices<sup>9</sup>
- Greater than 95% reported clarity with digital devices<sup>9</sup>
- Nearly 100% reported clear, reliable vision<sup>9</sup>

\* Versus ACUVUE® OASYS 1-Day

\*\* More wearers achieved a visual tear break up time  $\geq 10$  seconds versus ACUVUE® OASYS 1-Day.

† Also significantly less than ACUVUE® OASYS 1-Day.

<sup>0</sup> Filtering of HEV light by contact lenses has not been demonstrated to confer any health benefit to the user, including but not limited to retinal protection, protection from cataract progression, reduced eye strain, improved contrast, improved acuity, reduced glare, improved low light vision, or improved circadian rhythm/sleep cycle. The Eye Care Professional should be consulted for more information.

<sup>3</sup> Versus publicly available information for standard daily use contact lenses as of July 2022.

<sup>4</sup> Descriptive data from 4 historical clinical studies.

<sup>5</sup> Versus 1-DAY ACUVUE® MOIST MULTIFOCAL and ACUVUE® OASYS MULTIFOCAL

<sup>6</sup> Compared to competitor's designs, technology optimized for both the parameters of refractive error and add power.

<sup>7</sup> Descriptive data from 4 clinical studies.

<sup>8</sup> Intention to continue wearing contact lenses based on indicating "Definitely/Probably would continue wearing contact lenses in the next 12 months."

<sup>9</sup> Helps protect against transmission of harmful UV radiation to the cornea & into the eye.

**\*WARNING:** UV-absorbing contact lenses are NOT substitutes for protective UV-absorbing eyewear such as UV-absorbing goggles or sunglasses because they do not completely cover the eye and surrounding area. You should continue to use UV-absorbing eyewear as directed. **NOTE:** Long-term exposure to UV radiation is one of the risk factors associated with cataracts. Exposure is based on a number of factors such as environmental conditions (altitude, geography, cloud cover) and personal factors (extent and nature of outdoor activities). UV-blocking contact lenses help provide protection against harmful UV radiation. However, clinical studies have not been done to demonstrate that wearing UV-blocking contact lenses reduces the risk of developing cataracts or other eye disorders.

# in contact lens performance



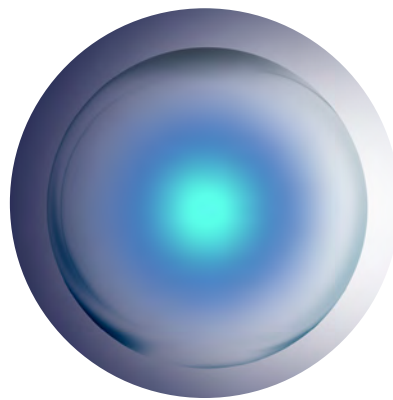
**3 powerful technologies united to meet more presbyopic needs<sup>oo</sup>**

## Pupil Optimized Design For vision at **all distances**<sup>10</sup>

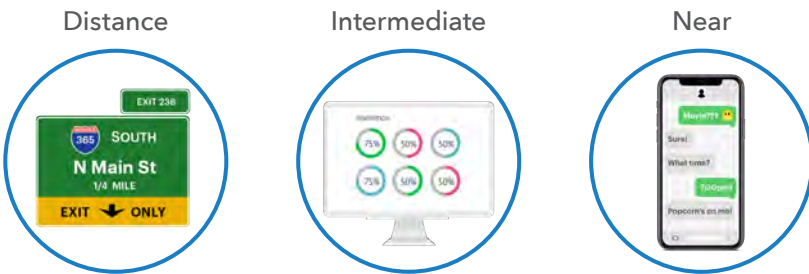
Only ACUVUE<sup>®</sup> tailors **100%** of parameters to pupil size variations across both age and refraction<sup>^^11</sup>

**Same unique optical design** across all ACUVUE<sup>®</sup> Multifocal contact lenses<sup>11</sup>

**92%** of wearers successfully fit in first pair at first visit<sup>12</sup>



## Why pupil optimized design matters:



## Proven on-eye performance in clinical trials<sup>‡</sup>

- 94% report clear vision when using a digital device<sup>10</sup>
- 80% report clear vision near, far and in-between<sup>10</sup>
- 94% report comfort throughout the day<sup>10</sup>
- 90% report end-of-day comfort<sup>10</sup>

<sup>1</sup> Eyesafe estimate based upon Nielsen Q3 2019 Total Audience Report. <sup>2</sup> Tsubota K, Nakamori K. Dry eyes and video display terminals. N Engl J Med. 1993;328(8):584. doi: 10.1056/NEJM199302253280817. <sup>3</sup> Patel S, Henderson R, Bradley L, et al. Effect of visual display unit use on blink rate and tear stability. Optom Vis Sci 1991;68(11):888-892. doi: 10.1097/00006324-199111000-00010. <sup>4</sup> JJV data on file, survey fielded to 468 contact lens wearing patients in the US in April 2022. <sup>5</sup> JJV Data on File 2022. Blue-Violet Filter Utilized in ACUVUE<sup>®</sup> OASYS MAX 1-Day Contact Lenses. <sup>6</sup> JJV Data on File 2022. TearStable<sup>™</sup> Technology Definition. <sup>7</sup> JJV Data on File 2022. Effect on Tear Film and Evaluation of Visual Artifacts of ACUVUE<sup>®</sup> OASYS MAX 1-Day Family with TearStable<sup>™</sup> Technology. <sup>8</sup> JJV Data on File 2022. Material Properties: 1-DAY ACUVUE<sup>®</sup> MOIST, 1-DAY ACUVUE<sup>®</sup> TruEye<sup>®</sup>, ACUVUE<sup>®</sup> OASYS 1-Day with HydraLuxe<sup>®</sup> Technology and ACUVUE<sup>®</sup> OASYS MAX 1-Day with TearStable<sup>™</sup> Technology Brand Contact Lenses and other daily disposable contact lens brands. <sup>9</sup> JJV Data on File. CSM Subjective Responses ACUVUE<sup>®</sup> OASYS MAX 1-Day Contact Lenses - Retrospective Meta-analysis. <sup>10</sup> JJV Data on File 2022: Subjective Stand-Alone Claims for ACUVUE<sup>®</sup> OASYS MAX 1-Day MULTIFOCAL Contact Lenses - Exploratory Meta-analysis. <sup>11</sup> JJV Data on File 2022. ACUVUE<sup>®</sup> PUPIL OPTIMIZED DESIGN Technology: JVC Contact Lenses, Design Features, and Associated Benefits. <sup>12</sup> JJV Data on File 2022: Stand-Alone Fit Success Claims for ACUVUE<sup>®</sup> OASYS MAX 1-Day MULTIFOCAL Contact Lenses. <sup>13</sup> Mostafa Y, Saif M, Saeed M, and ElSaadany S. The Effect of Age and Gender on Tear Film Breakup Time. Egyptian Journal of Medical Research. 2021;2:137-148. <sup>14</sup> Van Den Berg TJ, Van Rijn LJ, Michael R, et al. Straylight effects with aging and lens extraction. Am J Ophthalmol 2007;144(3):358-363. <sup>15</sup> JJV Data on File 2021. Growth Levers analysis based on Foresight Associates, IPSOS/Appinio Global Incidence Tracker, retail outlet consumption data and national census population data covering the United States, United Kingdom, Russia, Japan, South Korea, and China. <sup>16</sup> JJV Data on File 2020. Survey conducted with representative United States (n=1,000) and United Kingdom (n=1,000) consumers, ages 12-64.

**Important safety information:** ACUVUE<sup>®</sup> Contact Lenses are indicated for vision correction. As with any contact lens, eye problems, including corneal ulcers, can develop. Some wearers may experience mild irritation, itching or discomfort. Lenses should not be prescribed if patients have any eye infection, or experience eye discomfort, excessive tearing, vision changes, redness or other eye problems. Consult the package insert for complete information. Complete information is also available from Johnson & Johnson Vision Care division of Johnson & Johnson Inc., by calling 1-800-267-5098 or by visiting [jnjvisionpro.ca](http://jnjvisionpro.ca).

The intense demands of today are **even more troubling for the aging eye**

Accommodation declines, impacting near vision



Tear film break up time **reduces 50%** by age 50<sup>13</sup>, which can lead to dryness and inconsistent vision



Light scatter **doubles** by age 60, resulting in increased visual artifacts<sup>14</sup>



Declines in comfort and vision can lead to **contact lens drop-out**

41%

of current contact lens wearers are 40+<sup>15</sup>

94%

expect to continue in contact lenses<sup>Δ16</sup>

52%

of those over 45 will drop-out as they develop presbyopia<sup>15</sup>

NEW!



Also available in Multifocal

For more information,  
visit [jnvisionpro.ca](https://jnvisionpro.ca)



For practice resources,  
visit [acuvuelibrary.ca](https://acuvuelibrary.ca)



**Important safety information:** ACUVUE® Contact Lenses are indicated for vision correction. As with any contact lens, eye problems, including corneal ulcers, can develop. Some wearers may experience mild irritation, itching or discomfort. Lenses should not be prescribed if patients have any eye infection, or experience eye discomfort, excessive tearing, vision changes, redness or other eye problems. Consult the package insert for complete information. Complete information is also available from Johnson & Johnson Vision Care division of Johnson & Johnson Inc., by calling 1-800-267-5098 or by visiting [jnvisionpro.ca](https://jnvisionpro.ca).

© Johnson & Johnson Vision Care division of Johnson & Johnson Inc. 2022 PP2022MLT5621 August 2022 AOMX-07-22-23-CE

ACUVUE®